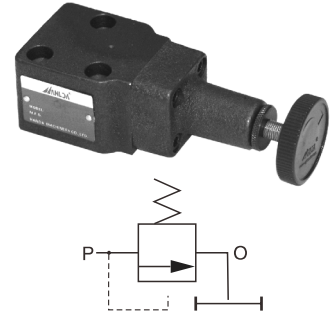


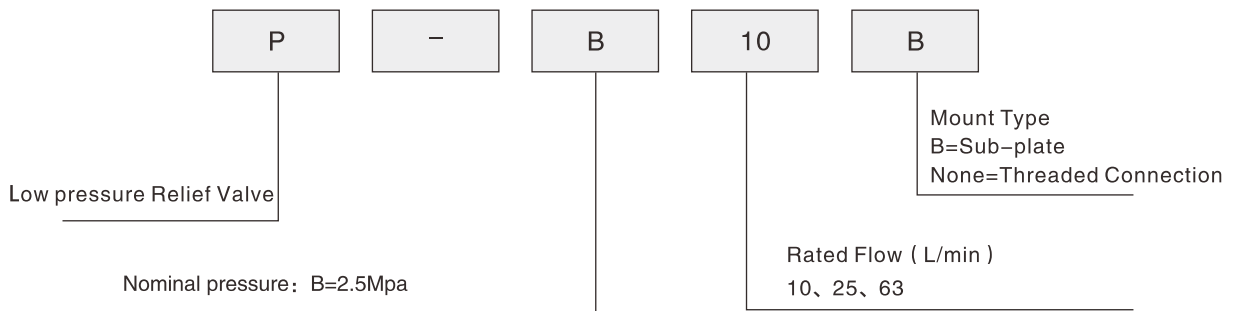
低压溢流阀

Low pressure relief valve

The using of low pressure relief valve is same as medium pressure relief valve, but it doesn't have unloading port can not use to remote regulating and unloading. sub-plate low pressure relief valve have one oil inlet and oil outlet, tube low pressure relief valve has two oil inlets, can choose any one as oil return port, P is oil inlet, O is oil outlet.



【 Model Description 】



【 Parameter 】

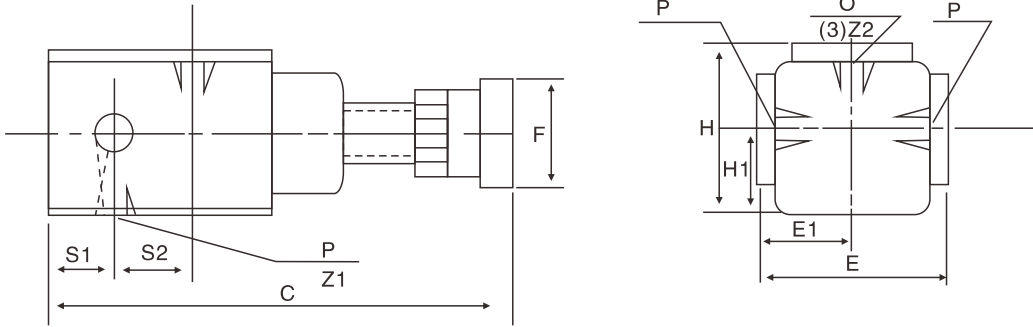
Model	Flow L/min	Pressure MPa		Port Size		Valve Size(mm)	Weight KG
		Max.	Min.	Thread (inch)	Sub-plate (mm)		
P-B10B	10	2.5	0.3	Z1/4"	Φ8	Φ12	1.5
P-B25B	25			Z3/8"	Φ12	Φ16	2
P-B63B	63			Z3/4"	Φ18	Φ20	2.5

低压溢流阀

Low pressure relief valve

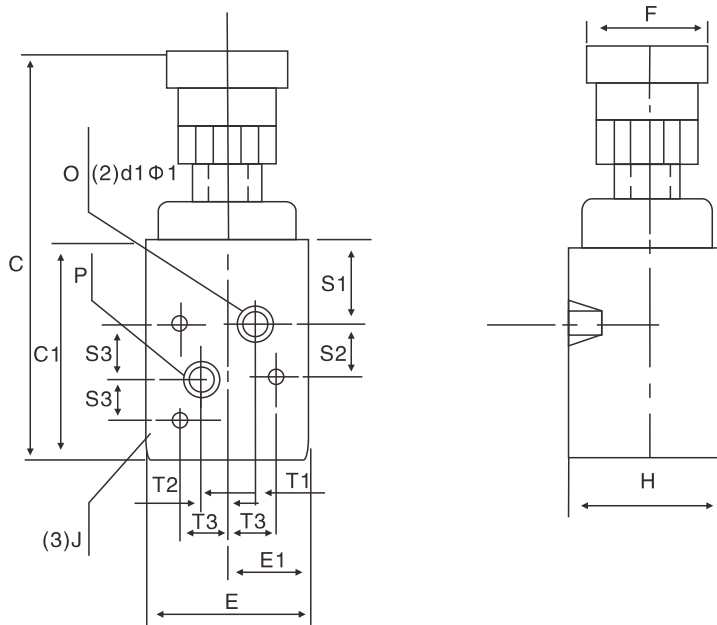
[Installation Dimension]

Threaded Connection



Model	C max	C min	E	H	S1	S2	E1	H1		Z2	F
P-B10	147	137	54	49	27	14	27	22	Z _{1/4"}	Z _{1/4"}	Φ42
P-B25	156	147	60	55	29	18	30	25		Z _{3/8"}	Φ42
P-B63	173	158	74	64	34	22	37	27		Z _{3/4"}	Φ50

Sub-plate Mount



Model	C max	C min	E	H	C1	E1	S1	S2	S3	T1T2	T3	d1Φ1	J	F
P-B10	145	137	58	46	65	65	24	14	17	11	19	Φ8Φ14	M8X50	Φ42
P-B25	156	147	66	52	75	75	28	18	19	13	23	Φ12Φ18	M8X40	Φ42
P-B63	173	158	82	56	86	86	30	22	22	19	29	Φ18Φ25	M8X45	Φ50

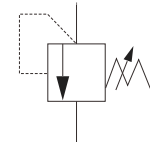
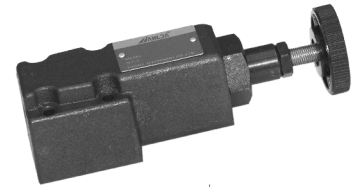
直动式溢流阀

Direct Type Relief Valve

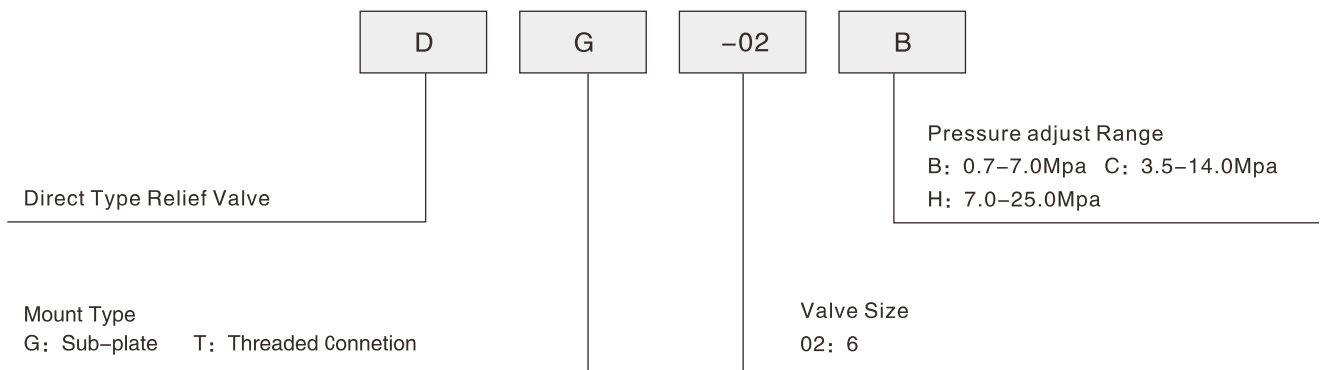
DG、DT-01、DG、DT-02 series

【 Features 】

1. This valve used in a hydraulic circuit to prevent damage due to over pressure and to adjust the maximum circuit pressure of small capacity.
2. Remote control type has BG(T), BHG(T), need SBG series pilot type pressure relief remote port connecting, this series relief valve as remote two-level or multi-level pressure controlling.



【 Model Description 】



【 Parameter 】

Model Number		Max. Operating Pressure Mpa	Pressure Mpa	Max. Flow L/Min	Weight KG	
Sub-plate Mounting	Threaded Connection				Threaded Connection	Sub-plate Mounting
DG-02	DT-02	25	B : 1-7 C:3.5-14 H:7-25	16	1.6	1.6

Note:

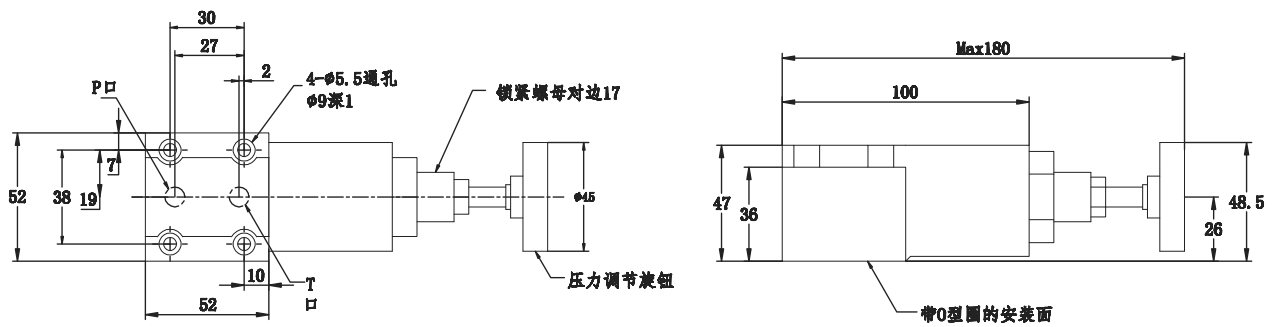
- 1.If the pipe internal volume of remote control type is a little big, may cause vibration phenomena, so use 4mm pipe.
2. The return pipe of direct type and remote type should connect the tank directly, should not connect any pipes of other valves.
3. To adjust the pressure, loosen the lock nut and turn the handle slowly clockwise for higher pressures or anti-clockwise for lower pressures. After adjustments, do not forget to tighten the lock nut.

直动式溢流阀

Direct Type Relief Valve

[Installation Dimension]

DG-02



DT-02

